

Wonderful  
WORLD

# Wonderful WORLD



MW

# Unit 11: Before our time

## Lesson 3

### Task 4, 5, 6



# 1. Warm up Cowboy game



# Cowboy game



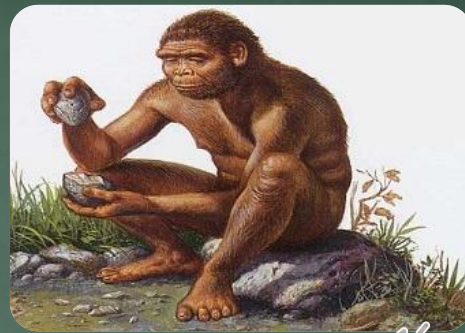
## 2. PRESENTATION




Listen and repeat.




Cave 



Early people 

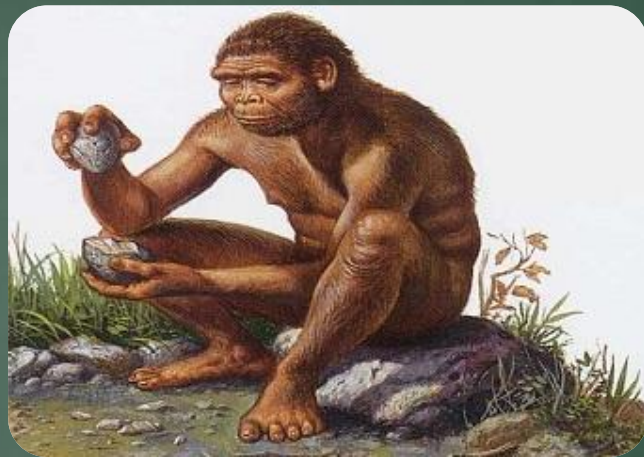


Dinosaur bones 



Mammoth 

Look and listen.



The dinosaur wasn't small.



wasn't = was not



The early people weren't tall.



weren't = were not



# 3. PRACTICE



4. Listen and repeat. TR 11.11



1. The dinosaur wasn't small.



2. Early People weren't tall.



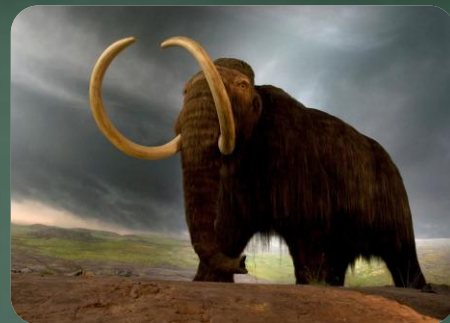
5. Look and say.



1. T.rex/ not/ friendly

The T.rex  
wasn't friendly.

Mammoths  
weren't dinosaurs.



2. mammoths/ not/ dinosaurs



3. Many dinosaurs/ not/ small

Many dinosaurs  
were not small.

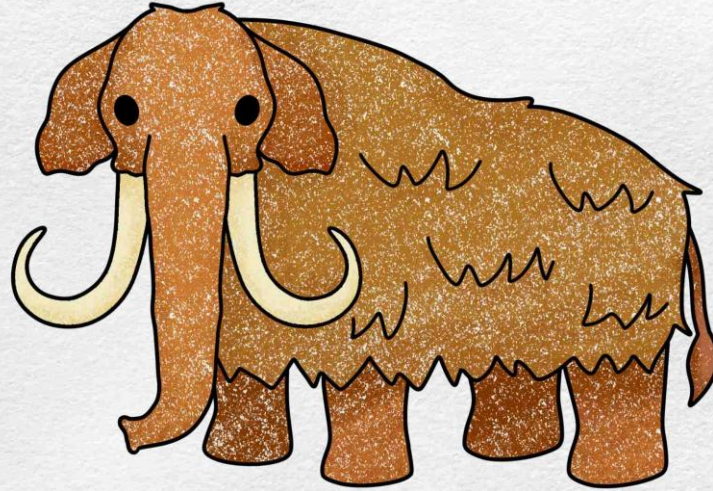
Early people  
were not tall.



4. Early people/ not/ tall

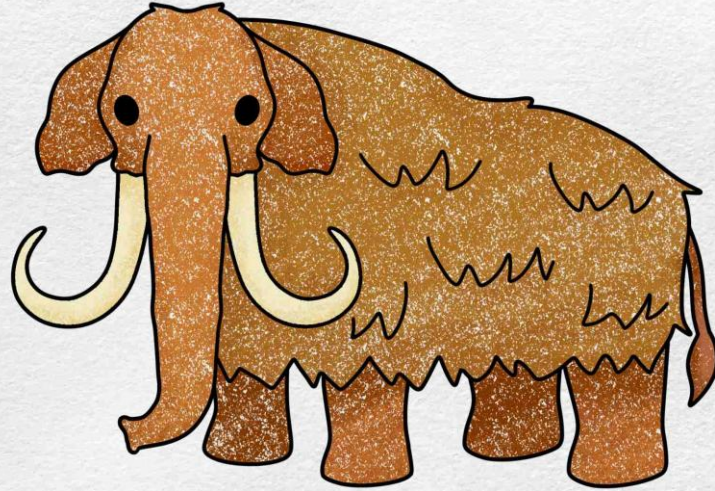
Before  
Drawing

Look and  
fill in the  
missing  
words.



Look at the \_\_\_\_\_. It wasn't  
a \_\_\_\_\_ elephant.  
It was \_\_\_\_\_. It wasn't  
\_\_\_\_\_

6. Draw and say.



Look at the mammoth. It wasn't  
a big elephant.  
It was friendly. It wasn't scary.

# 4. PRODUCTION





# Football game



A soccer goal is shown from a high angle. A player in a blue and black uniform is diving into the goal. A large blue banner with the text "GOAL!!!!" is overlaid on the image. In the background, a soccer ball is visible, and two other players in red and white striped uniforms are standing near the goal.

**GOAL!!!!**

Can you guess what this is?



Early people



Use these words to make a sentence:  
T.rex/ friendly



The T.rex was not friendly.



Unscramble the words:  
not/ mammoths/ were/ The/ small



The mammoths were  
not small.



Listen. What can you hear?



The early people weren't tall.



What is this?



A mammoth



Fill in the blanks:  
The dinosaurs \_\_\_\_\_ friendly.



were not/ weren't



Make a sentence, using the words:  
mammoths/not/ dinosaurs



Mammoths weren't/  
were not dinosaurs.



Make a sentence, using the words:  
Many dinosaurs/ not/ small



Many dinosaurs were not small.



Listen. What can you hear?



Many dinosaurs were  
not small.



# 5. ASSESSMENT



Write

cave dinosaur bones early people mammoth

1. Early people weren't tall. They were small. They were in dark caves.
2. Some dinosaur bones were really big.
3. A mammoth was a big elephant.



# UNIT 11: BEFORE OUR TIME

## LESSON 3: PERIOD 2

What we learnt today:

Review vocabulary:

- cave, early people, mammoth  
dinosaur bones

Structure:

- The dinosaur wasn't small.
- The early people weren't tall.
- wasn't = was not; weren't = were not



Thank you &  
goodbye!

