



UNIT 16. WHERE'S THE POST OFFICE?

LESSON 2





Town

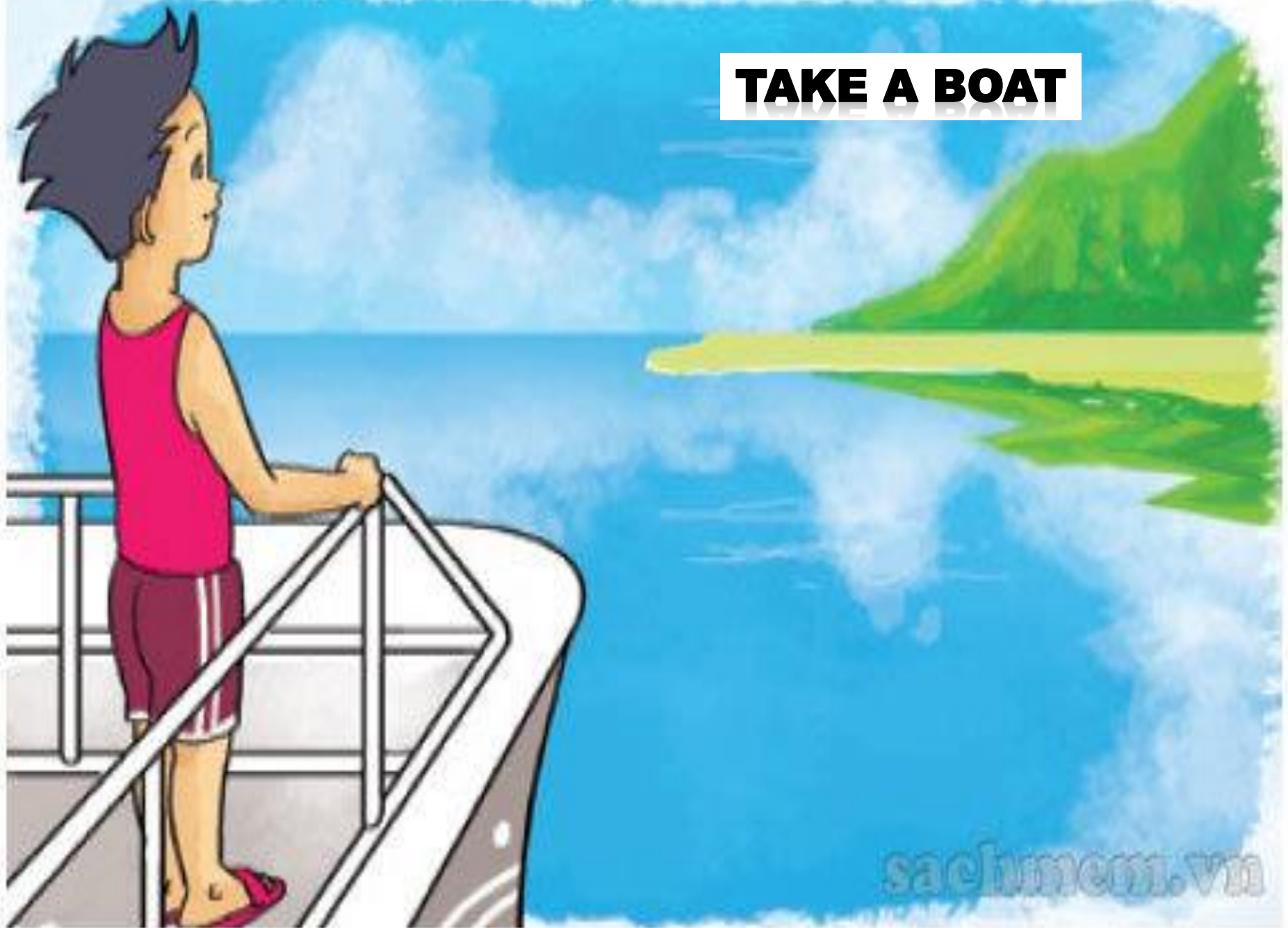


ENGLISH
Singsing

TAKE A COACH



TAKE A BOAT





GO BY PLANE

sachmer.vn

1 Look, listen and repeat.



How can we get to the zoo, Nam?



a



You can take a bus.



Where's the bus stop?



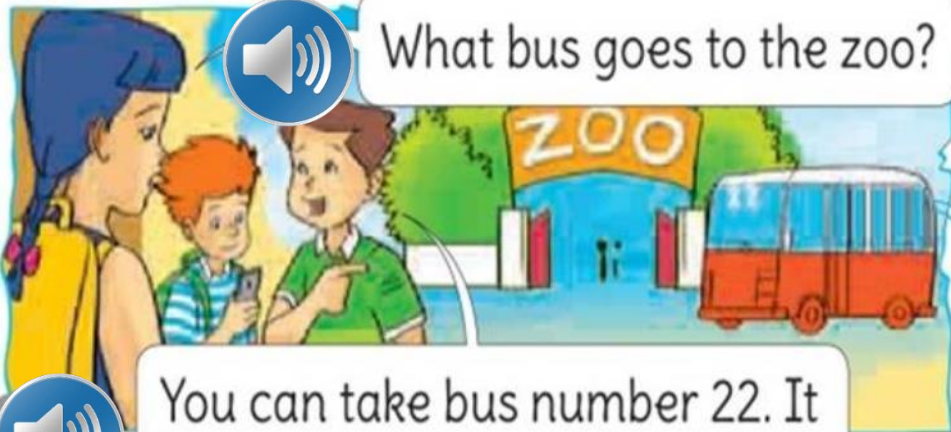
b



Go out of this building. Turn right. It's on the next corner.



What bus goes to the zoo?



It's very kind of you, Nam. Thanks a lot.



You're welcome.



You can take bus number 22. It stops right at the zoo entrance.

2 Point and say.



How can I get to _____?

You can _____.



the post office/
walk for five minutes



Phu Quoc Island/
take a boat



Sa Pa/
take a coach



Ho Chi Minh City/
go by plane

1. Vocabulary

- Take a coach
- Take a boat
- Go by plane



2. Model sentence

How can I get to **the post office**.

You can **walk for five minutes**.

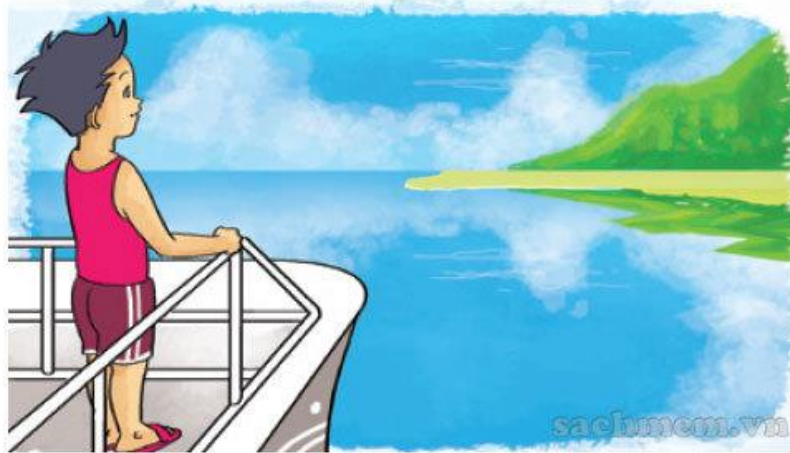


How can I get to **the post office**?



You can **walk for five minutes.**

How can I get to **Phu Quoc Island** ?



You can **take a boat**.

How can I get to **Sapa** ?



You can **take a coach**.

How can I get to **Ho Chi Minh city** ?



You can **go by plane.**

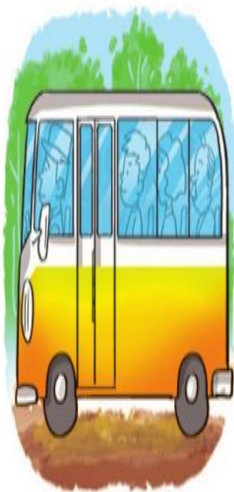
LISTEN AND WRITE

1

2

3

4



How can
they get
there?

By ...

1. Akiko

boat

2. Tony

taxi

3. Mai

coach

4. Linda

plane

LOOK, READ AND COMPLETE

how

welcome

foot

have

trip

zoo

Mai: We're going to have a school
(1) **trip** next weekend.

Akiko: Where are you going?

Mai: We're going to the (2) **zoo**

Akiko: Is it far from your school?

Mai: No, it isn't.

Akiko: How are you going to get there?

Mai: On (3) **foot**

Tony: I'll go to Ho Chi Minh City tomorrow.

Mai: (4) **How** are you going to get there?

Tony: By plane because I don't have much time.

Mai: (5) **Have** a nice trip!

Tony: Thanks a lot, Mai.

Mai: You're (6) **Welcome**

Giving Directions



Where's the cinema?

We are here, at Lemon Street.
Turn right at Pear Street. Go
straight ahead. It's _____.



IT'S TIME

TO PLAY



Lucky STARS





LUCKY STARS





Lucky STARS

+5



-5

UNLUCKY

QUESTION 01



Where's the ... ?



A

school

B

bus stop

C

museum

D

supermarket



Where's the ... ?



A

market

B

pharmacy

C

supermarket

D

museum



Where's the ... ?



A

stadium

B

Bus stop

C

school

D

museum

QUESTION 04



Where's the ... ?



A

Post office

B

Bus stop

C

Market

D

Supermarket





Where's the ... ?



A

museum

B

school

C

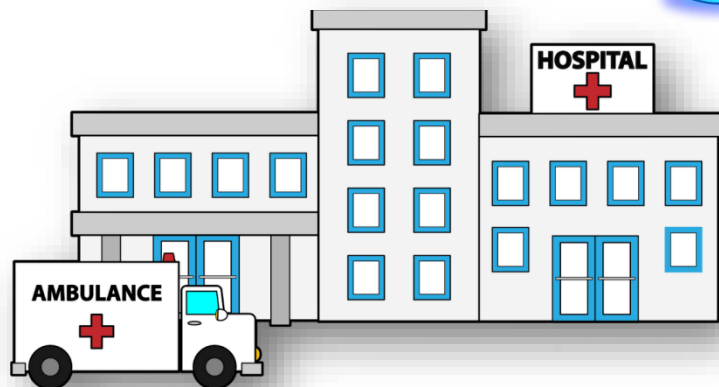
theatre

D

cinema



Where's the ... ?



A

museum

B

cinema

C

Hospital

D

theatre



Where's the ... ?



A

Post office

B

bank

C

museum

D

restaurant





Where's the ... ?



A

stadium

B

cinema

C

restaurant

D

theatre

