

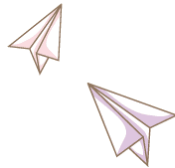
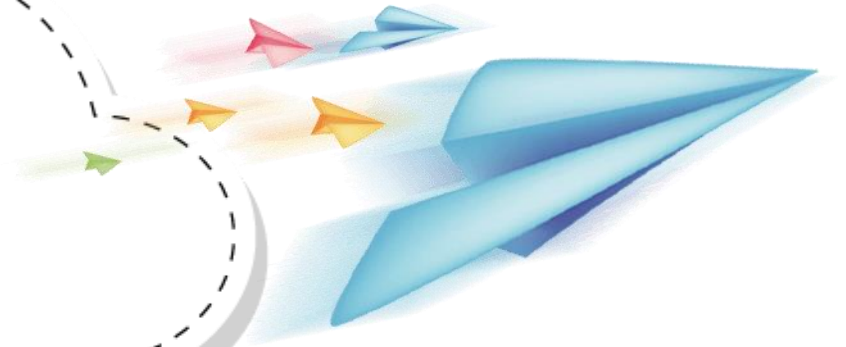
Unit 0

Alphabet 1





Warm up







**Listen
and
guess the
song**



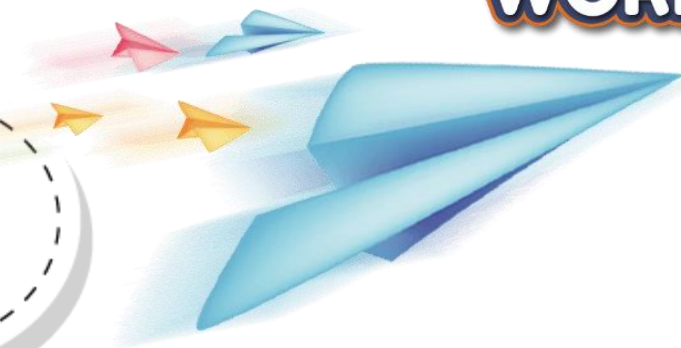


Alphabet





Presentation



Task 1: Listen and repeat.



Alphabet

Wonderful
WORLD

1 Listen and repeat.  TR: 0.10 

Aa 



Bb 



Cc 



Dd 



Ee 



Ff 



Gg 



Hh 



MEMORY GAME

Start

1

2

3

4

5

6

7

8



9

10

11

12

13

14

15

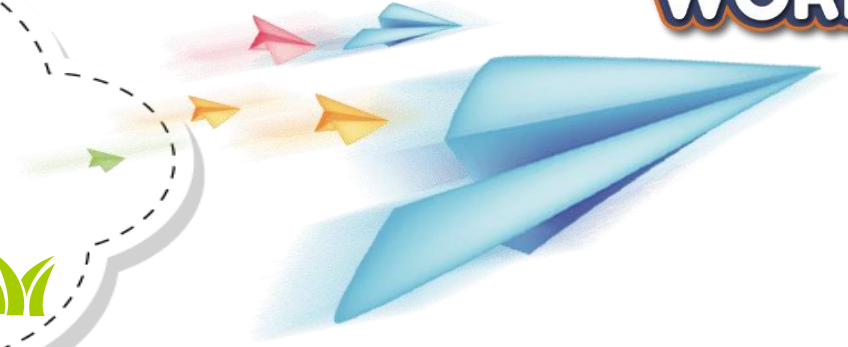
16



3



Practice

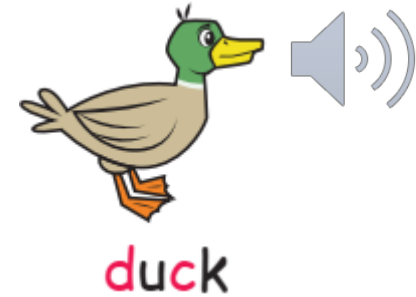
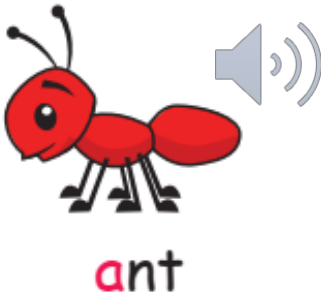


Task 2: Listen and repeat. Then
point and say.



Alphabet

2 Listen and point. Repeat.  TR: 0.11 



2 Listen and point. Repeat.  TR: 0.11



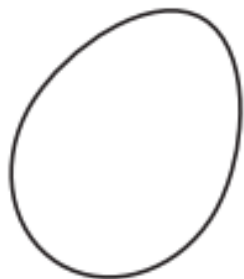
ant



boy



duck



egg



frog



hippo



PASS THE BALL

Play

PASS THE BALL

Play



3 Write and match. 

ant

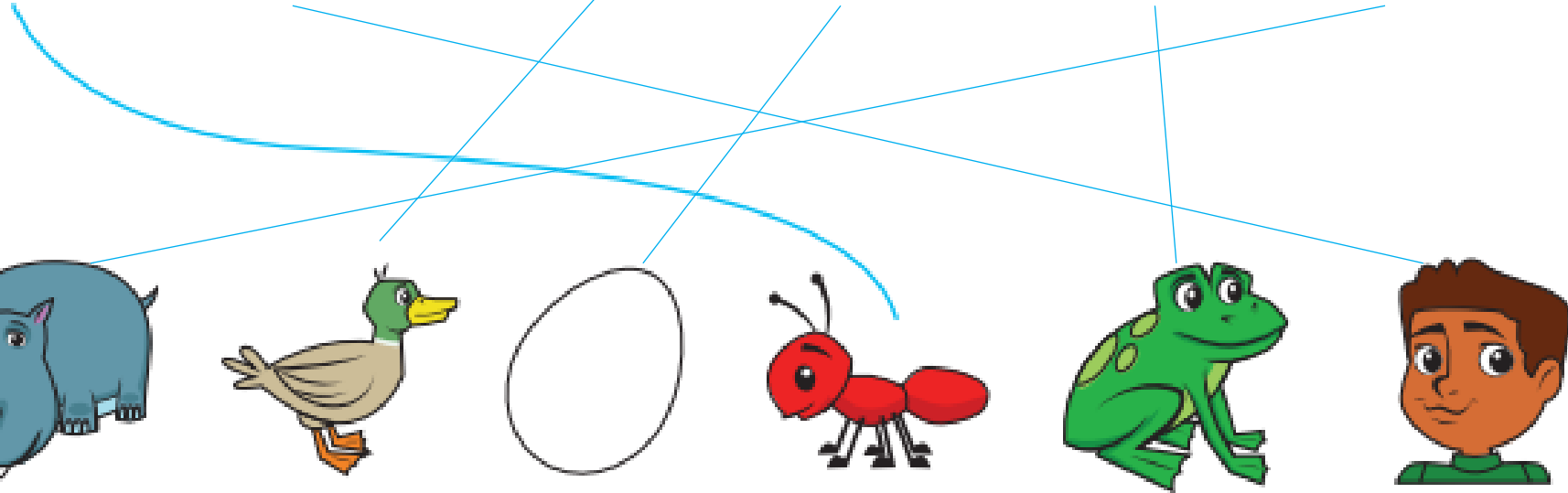
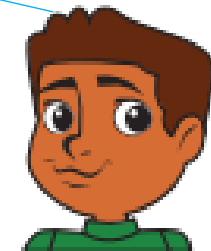
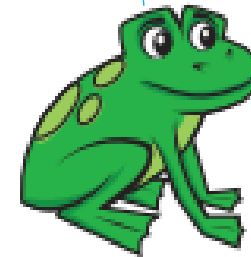
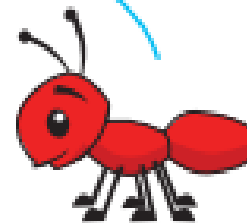
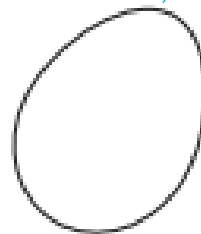
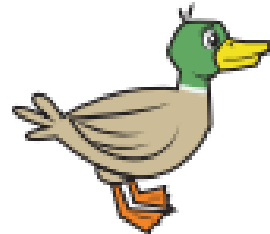
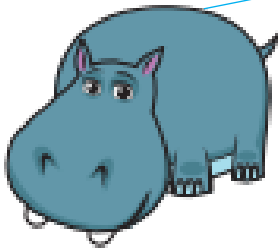
boy

duck

egg

frog

hippo

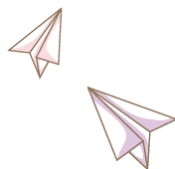




Production



Task 3: Let's play

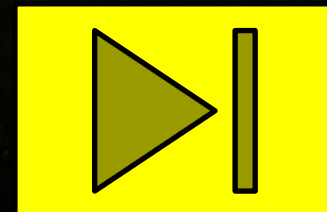




SPACE RACE

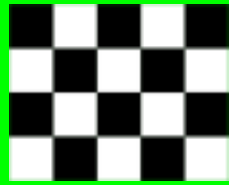
Team

Rocket Ship or Alien Ship?

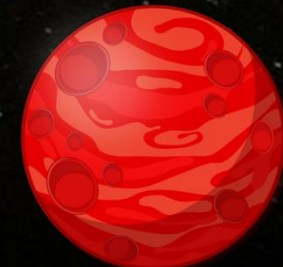
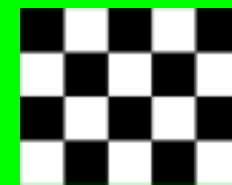


SPACE RACE

Wonderful
WORLD



ALIEN SHIP
WINS!



Next

SPACE RACE

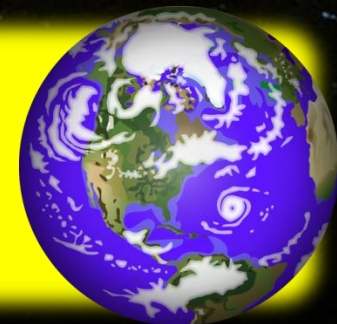
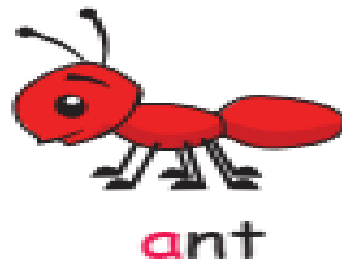
Wonderful
WORLD



Next

A is for....

Wonderful
WORLD

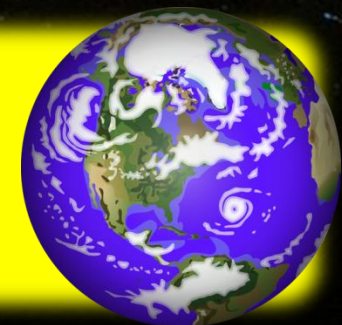


B is for....

Wonderful
WORLD



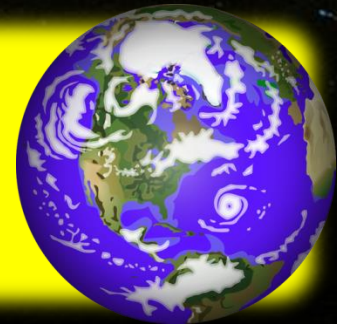
boy



What's this?



It's a duck



SHOW



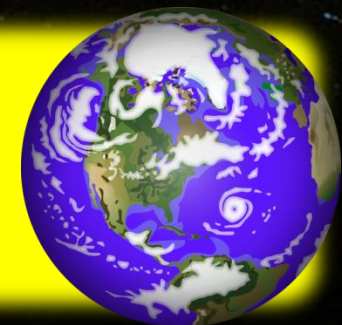
SHOW



H is for.....



hippo



Which begins with letter E?

Wonderful
WORLD

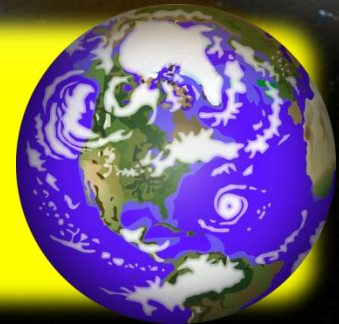
7

8

9

eight

8



Which begins with letter F?

Wonderful
WORLD

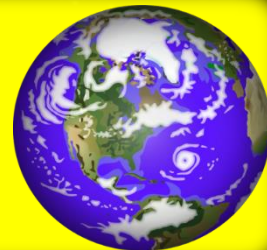
2

3

4

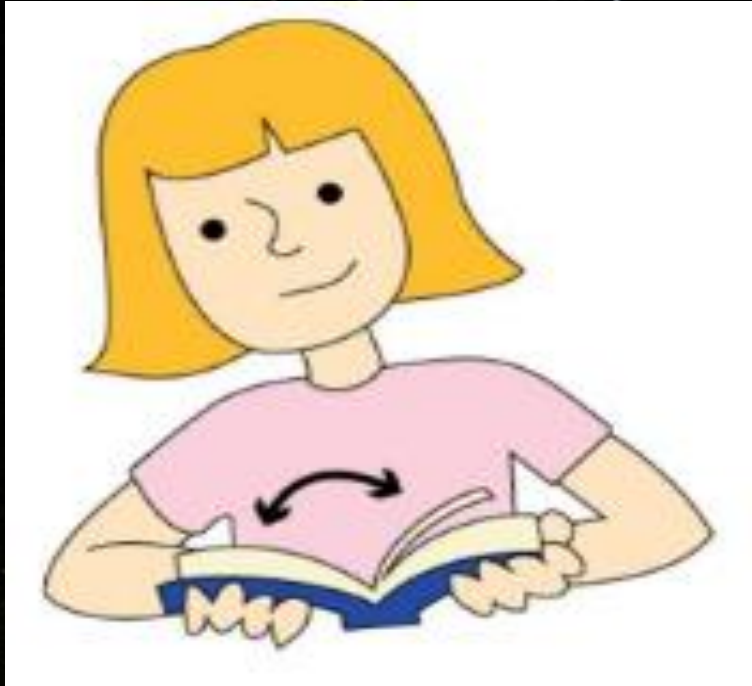
four

4

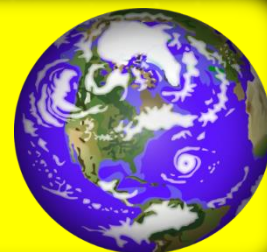


Which begins with letter C?

Wonderful
WORLD



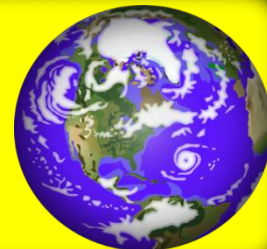
close



Which begins with letter G?

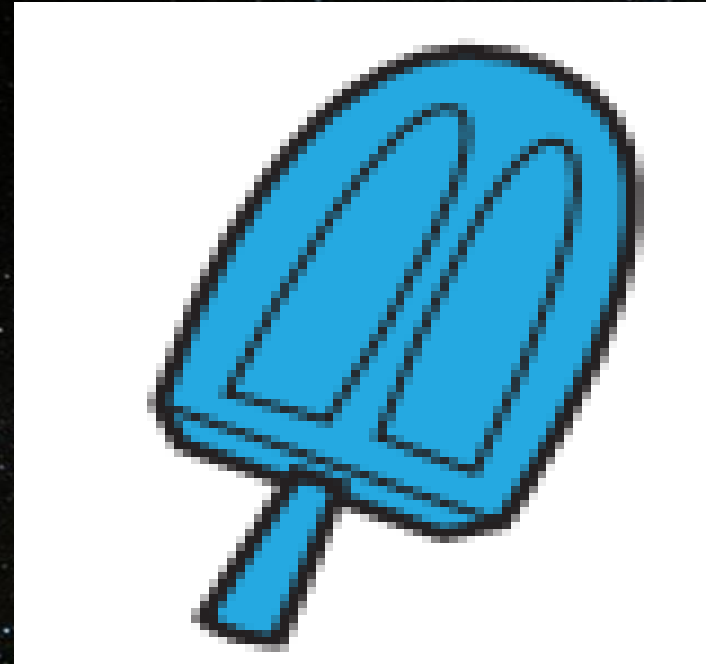
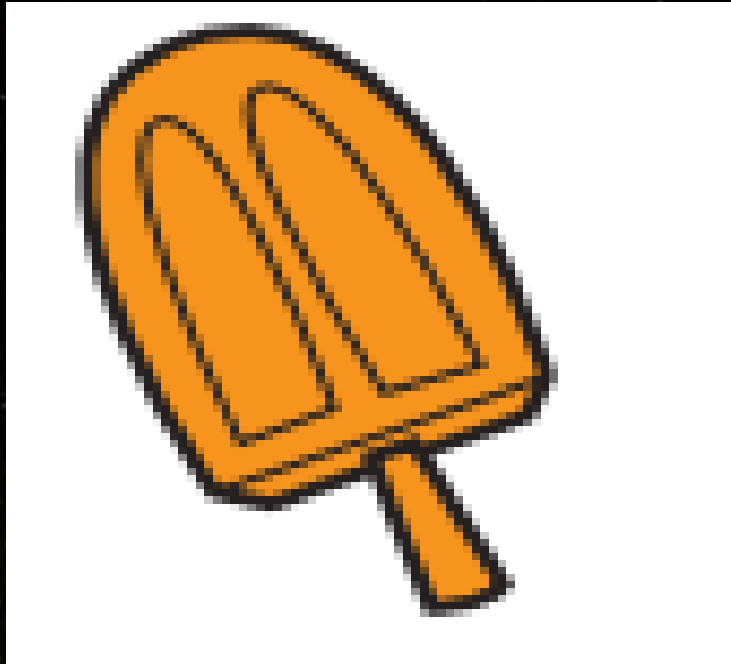


green

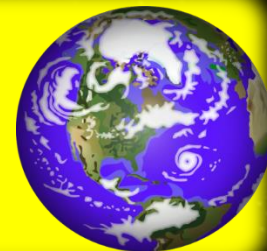


Which begins with letter B?

Wonderful
WORLD

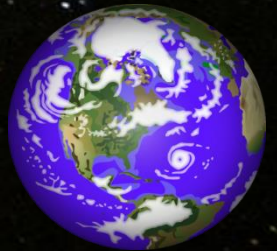


blue



What's next?

Aa Bb



What's next?

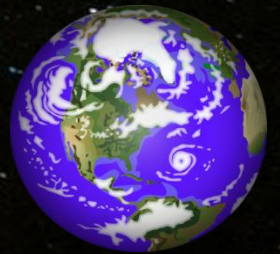
Bb Cc



What's next ?

Wonderful
WORLD

Ee Ff

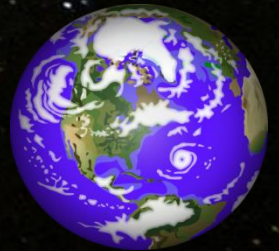


What's missing?

Ee



Gg



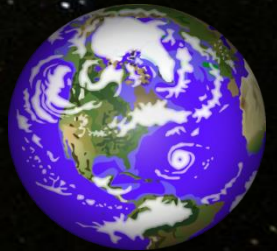
What's missing?

Wonderful
WORLD

Aa

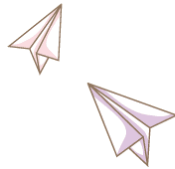
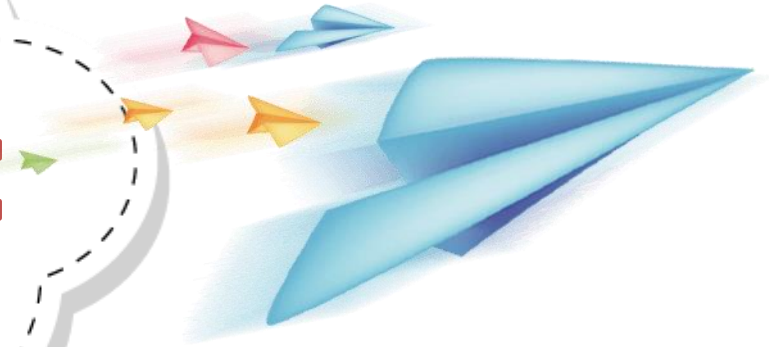


Cc





Assessment



Remove one unnecessary letter to make correct word

1. a ■ nt -> ant
2. boy ■ -> boy
3. eg ■ g -> egg
4. f ■ rog -> frog
5. duc ■ k -> duck
6. h ■ ippo -> hippo

