




UNIT 16. WHERE'S THE POST OFFICE?

LESSON 3



■ Use Falling Intonation In...



1. Declarative sentences --> I live in France.
2. Commands --> Sit down!
3. Exclamatory sentences --> What a wonderful girl!
4. At the last item of a list --> I like cars, trucks and BIKES.
5. Wh questions --> Where do you live?
6. Tag question --> You live in France, DON'T YOU?
(It's not a real question, you already know the answer. You just want to confirm it or are just making conversation.)

■ Use Rising Intonation In...



1. Yes/No questions --> Are you French?
2. In every item of list except the last one --> I like CARS, TRUCKS and bikes.
3. Dependent or introductory sentences --> IF SHE CALLS, ask her to come.
4. Direct address --> SIR, be careful with the dog.
5. Tag questions --> You live in France, DON'T YOU?
(Here the tag question is a real question because you don't know the answer).

LISTEN AND REPEAT

Where's the post office? ~

It's opposite the stadium. ~

Where's the cinema? ~

It's next to the post office. ~

Where's the supermarket? ~

It's on the corner of the street. ~

LISTEN AND CIRCLE

1. Where's the cinema?

a. It's opposite the museum.

b. It's opposite the library.

2. Where's the restaurant?

a. It's next to the supermarket.

b. It's next to the stadium.

3. Where's the park?

a. It's on the corner of the street.

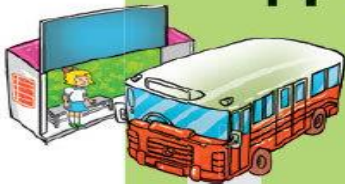
b. It's at the end of the street.

READ AND DO THE TASKS

Dear Linda,
I'm happy you're going to visit me. You can take bus Number 12 at West Street and get off at the fifth stop. Then walk along the street for five minutes. You will see Pear Street at the end of the street. Turn left and you will see a pharmacy on the left. My house is opposite the pharmacy. It is behind a green fence. See you!
Tony



1. **Bus stop**



3. **pharmacy**



4. **Tony's house**



2. **Pear Street**

READ AND DO THE TASKS

Dear Linda,
I'm happy you're going to visit me. You can take bus Number 12 at West Street and get off at the fifth stop. Then walk along the street for five minutes. You will see Pear Street at the end of the street. Turn left and you will see a pharmacy on the left. My house is opposite the pharmacy. It is behind a green fence. See you!
Tony



1. What bus should Linda take?

→ She should take bus Number 12.

2. Where should she get off the bus?

→ She should get off at the fifth stop.

3. What's the name of the road at the end of the street?

→ It's Pear Street.

4. What's opposite Tony's house?

→ A pharmacy is opposite his house.

5. What colour is the fence of Tony's house?

→ It's green.

WRITE DIRECTIONS

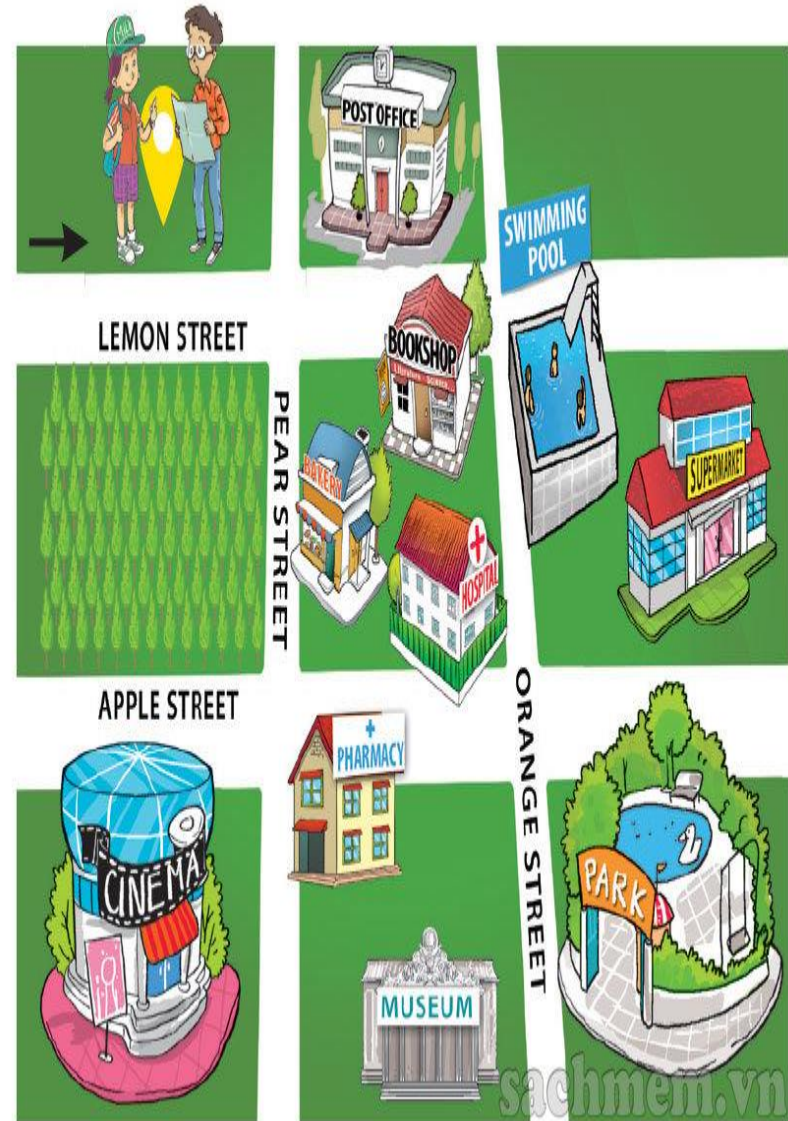
A: Where's the park?

B: You are here, at Lemon Street.

Go **straight ahead**. Turn **right** at **Orange Street**. The park is on the corner of **Orange Street** and **Apple Street**..

A: Where's the pharmacy?

B: Go **straight ahead**. Turn **right** at **Pear Street**. The pharmacy is on the corner of **Pear Street** and **Apple Street** /straight ahead. Turn **right** at **Pear Street**. The pharmacy is **opposite** the cinema.



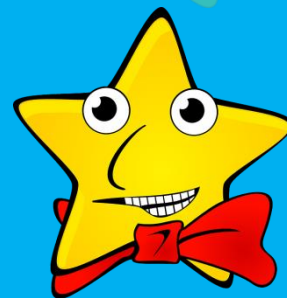
IT'S TIME

TO PLAY



Lucky STARS





LUCKY STARS





Lucky STARS

+5



-5

UNLUCKY

QUESTION 01



Where's the ... ?



A

school

B

bus stop

C

museum

D

supermarket



Where's the ... ?



A

market

B

pharmacy

C

supermarket

D

museum



Where's the ... ?



A

stadium

B

Bus stop

C

school

D

museum

QUESTION 04



Where's the ... ?



A

Post office

B

Bus stop

C

Market

D

Supermarket





Where's the ... ?



A

museum

B

school

C

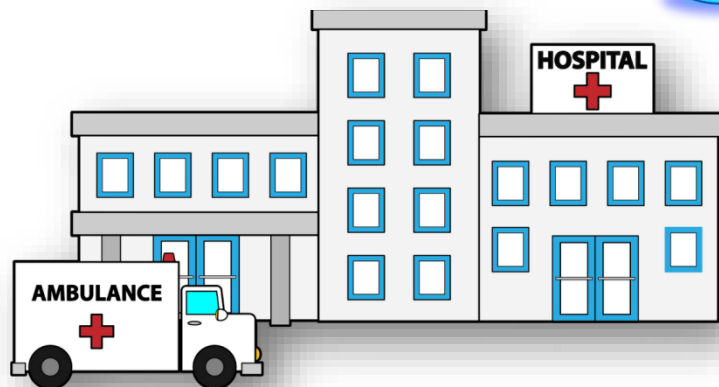
theatre

D

cinema



Where's the ... ?



A

museum

B

cinema

C

Hospital

D

theatre



Where's the ... ?



A

Post office

B

bank

C

museum

D

restaurant





Where's the ... ?



A

stadium

B

cinema

C

restaurant

D

theatre

